



ALTAIR

ONLY FORWARD

Altair PolEx for Altium 2021.2

Install Guide

Updated: 2/09/2022

altair.com

Contents

1. Introduction	3
2. System Requirements	3
3. Install Altair PolIEx Extension	4
4. Install Altair PolIEx for Altium	4
5. Uninstall Altair PolIEx for Altium	13
6. Going Forward	13

1. Introduction

This installation guide provides introductions for the Altair PolIEx for Altium installation on supported platforms. Altair PolIEx for Altium is available for the Altium users with limited functionalities.

You should visit <https://www.altair.com/pollex-for-ecad> to apply for and download the Altair PolIEx for Altium.

Should you be interested in upgrading to the full Altair PolIEx version, please visit <https://www.altair.com/pollex-for-altium/>.

For additional questions, please contact our PolIEx for Altium support team at pfasupport@altair.com.

2. System Requirements

2.1. Supported Platforms

Platforms		
OS	Version	Architecture
Windows	10	X86_64

2.2. Hardware Requirements

Hardware Information	Minimum requirements	Recommended requirements
CPU	Intel® Core™ i5 processor or equivalent	Intel® Core™ i7 processor or higher
Memory	4 GB	8 GB (higher recommended)
Complete Install Disk Space	3 GB	3 GB (higher recommended)
Display	1920 x 1080 resolution	1920 x 1080 resolution with true color
Graphics Hardware	OpenGL supported graphics card with an install driver allowing usage of the OpenGL functionality Supporting DirectX 10 or higher	Recommended to use NVIDIA and AMD GPUs
Miscellaneous	Adobe® Reader® Microsoft® Excel® (32 or 64-bit)	

3. Install Altair PolIEx Extension

You need to install **AltairPolIEx** extension in the **Extensions & Updates** of the Altium Designer.



4. Install Altair PolIEx for Altium

- **Preparing to Install the Altair PolIEx for Altium**

What you need to install and successfully run Altair PolIEx for Altium:

- Altair PolIEx for Altium 2021.2 installer for Windows platform.
- Installed the **AltairPolIEx** extension in the Altium Designer.

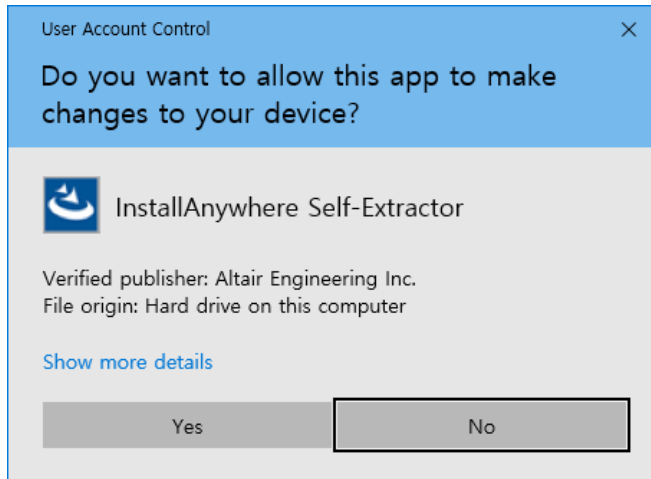


Note: Altair PolIEx for Altium is available only on a Windows machine.

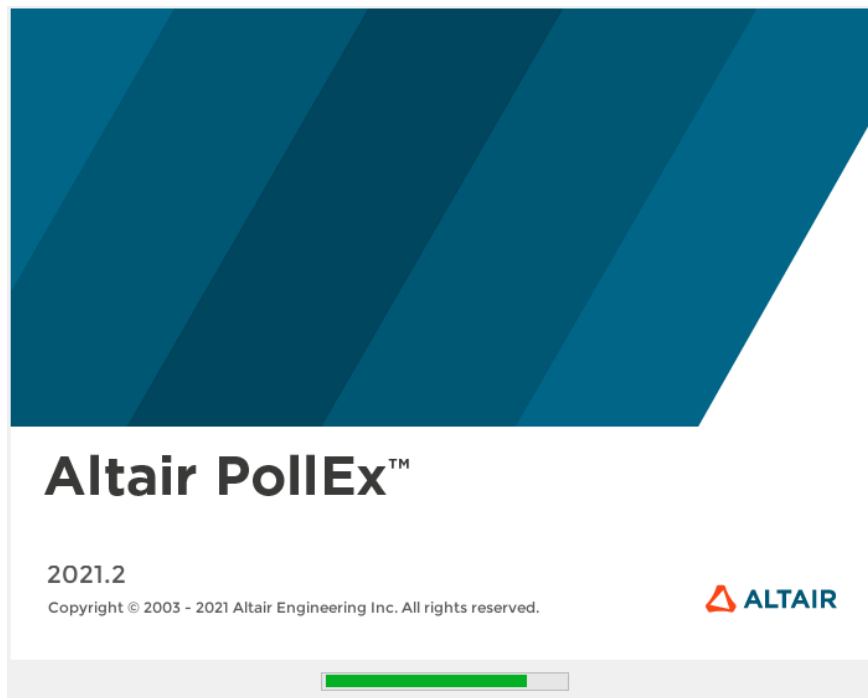
- **Starting the Installation Process**

The installation process is started by extracting the software.

1. Double-click the downloaded installation file.
2. If user account control (UAC) is enabled and you are an administrator, a prompt displays showing the Altair Engineering, Inc. digital signature for elevated permissions. Click **Yes** to continue.



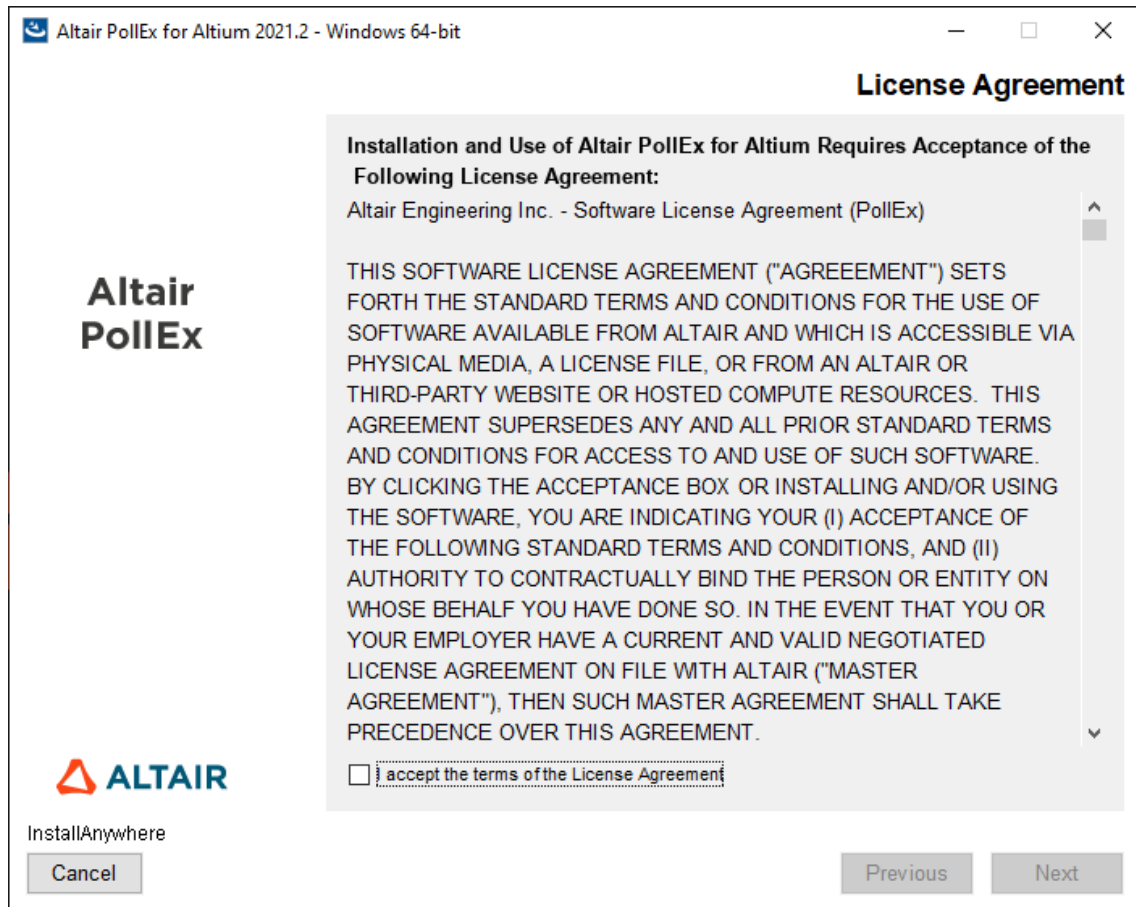
3. The splash screen is displayed while the installer is loaded.



- **Viewing the License Agreement**

The **License Agreement** panel is displayed.

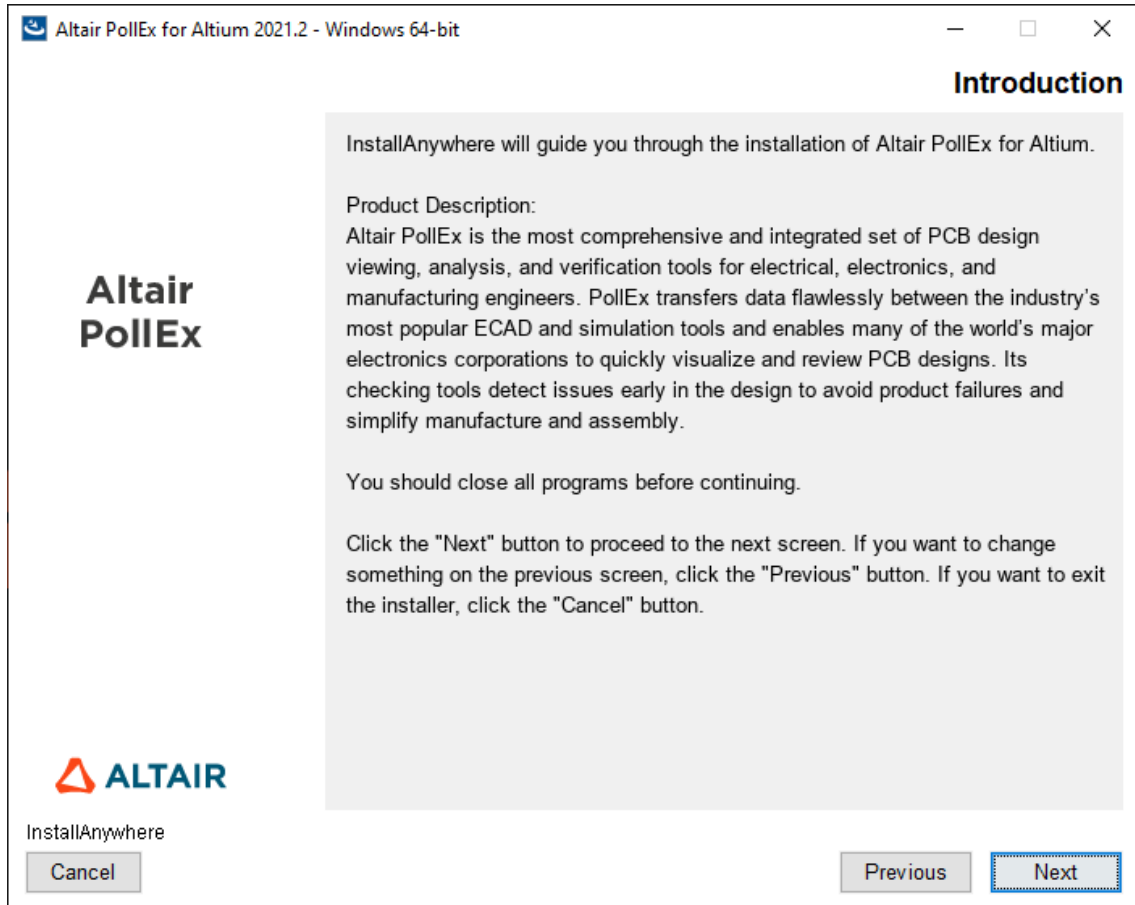
1. Read through the license agreement.
2. Click **I accept the terms of the License Agreement** to continue with the installation.
3. Click **Next** to continue.



- **Introduction the Installation Wizard**

The **Introduction** panel is displayed.

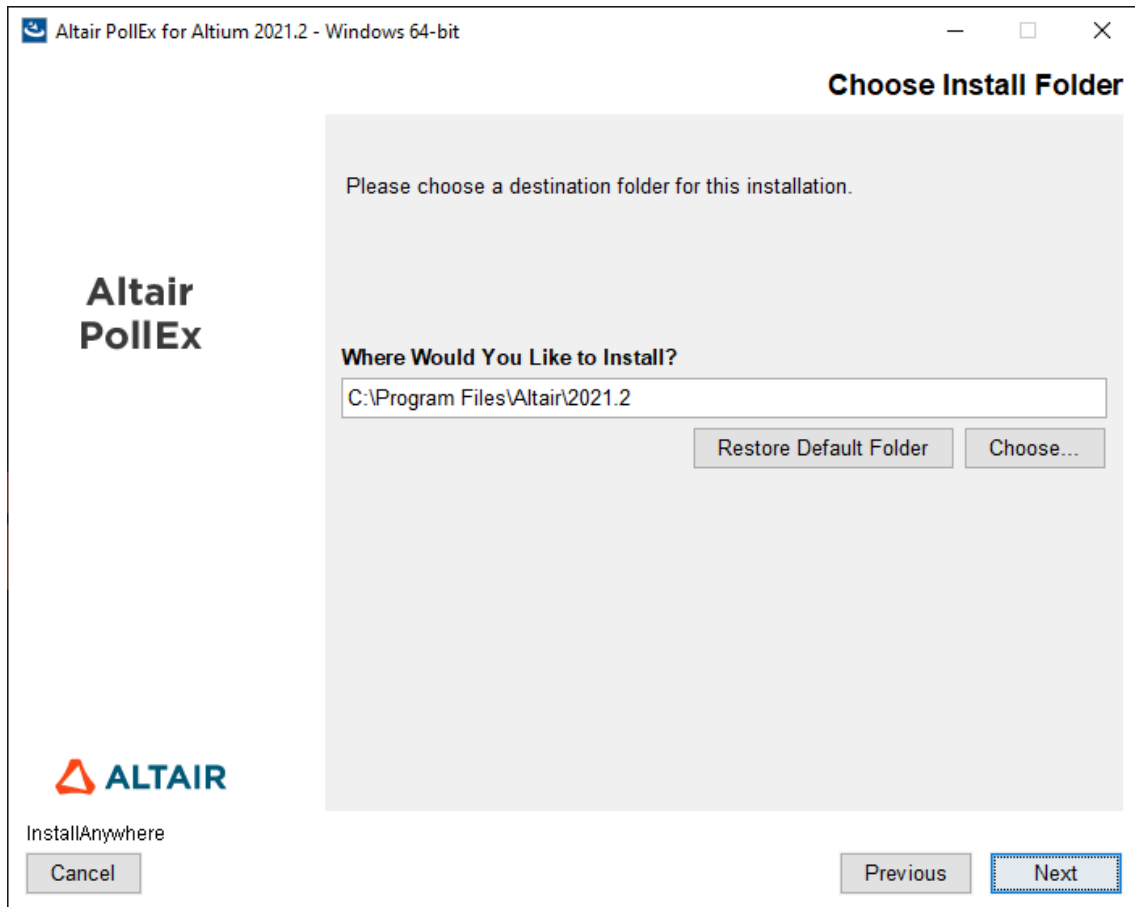
1. Read the introduction.
2. Click **Next** to continue.



- **Choosing the Install Folder**

The **Choose Install Folder** panel is displayed.

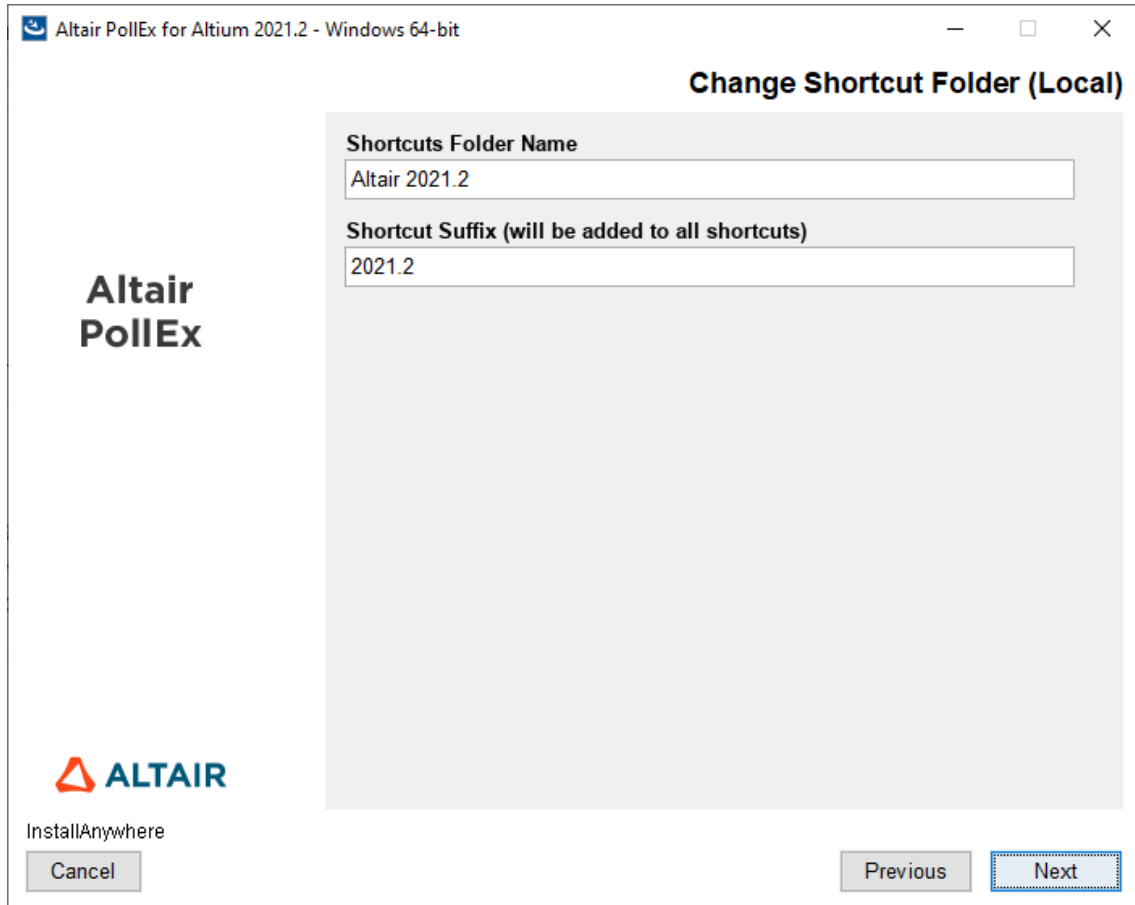
1. The default install folder is C:\Program Files\Altair\2021.2 and Altair PollEx for Altium will be installed in a PollExForAltium subfolder.
2. Click **Next** to continue.



- **Specifying the Location for Start Menu Shortcuts**

The **Change Shortcut Folder (Local)** panel is displayed.

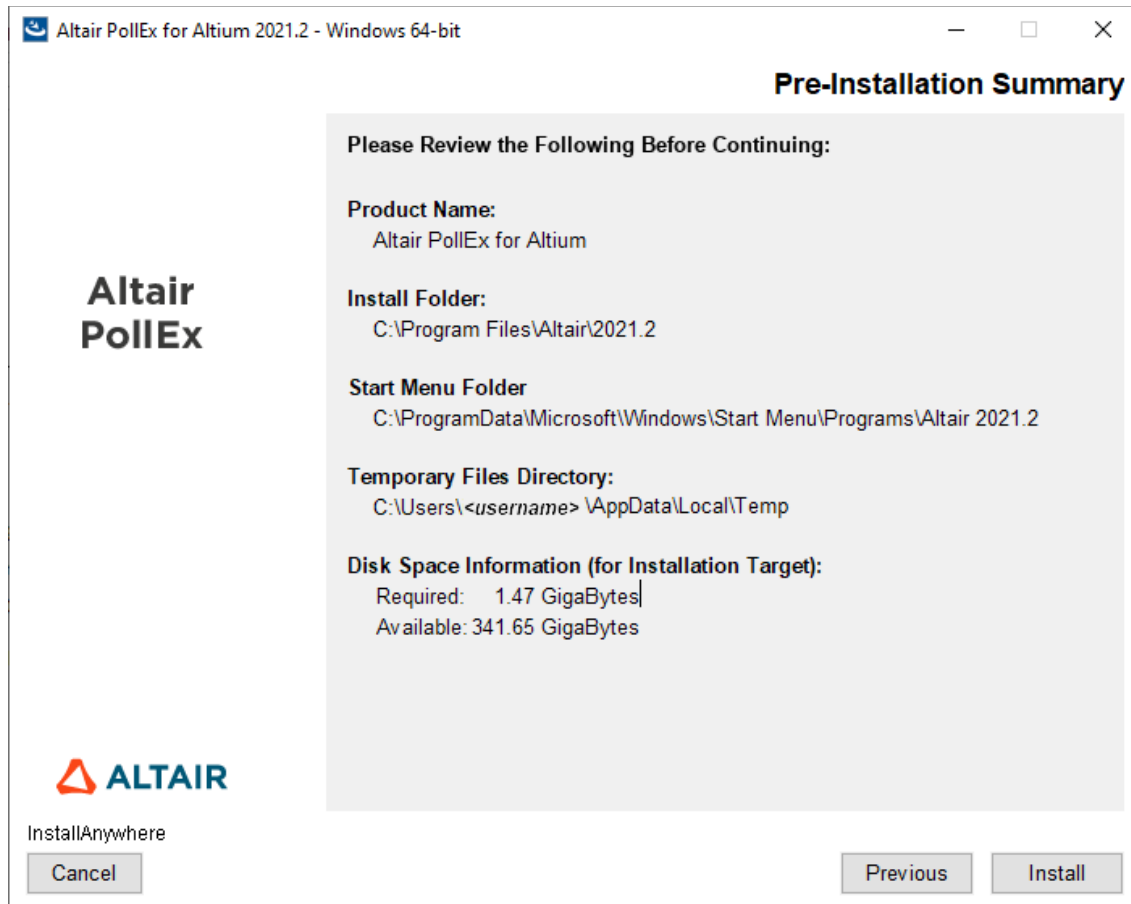
1. Specify the folder name that will contain the start menu shortcuts.
2. [Optional] Specify the suffix string to be added to the shortcuts.
3. Click **Next** to continue.



- **Verifying the Pre-Installation Options**

The **Pre-Installation Summary** panel is displayed. The summary contains details about the pending installation.

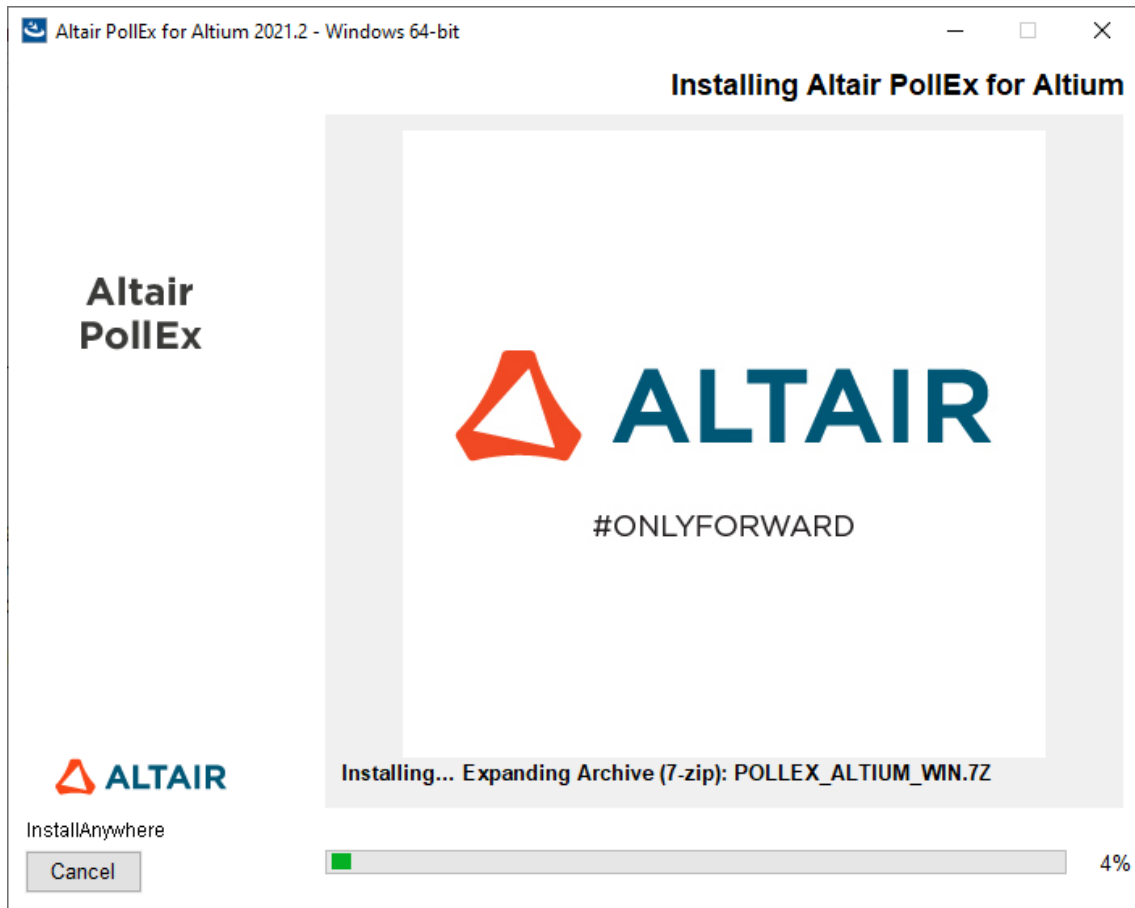
1. Review the installation details.
2. Click **Install** to continue.



- **Viewing the Installation Progress**

The **Installing Altair PolIEx for Altium** panel is displayed.

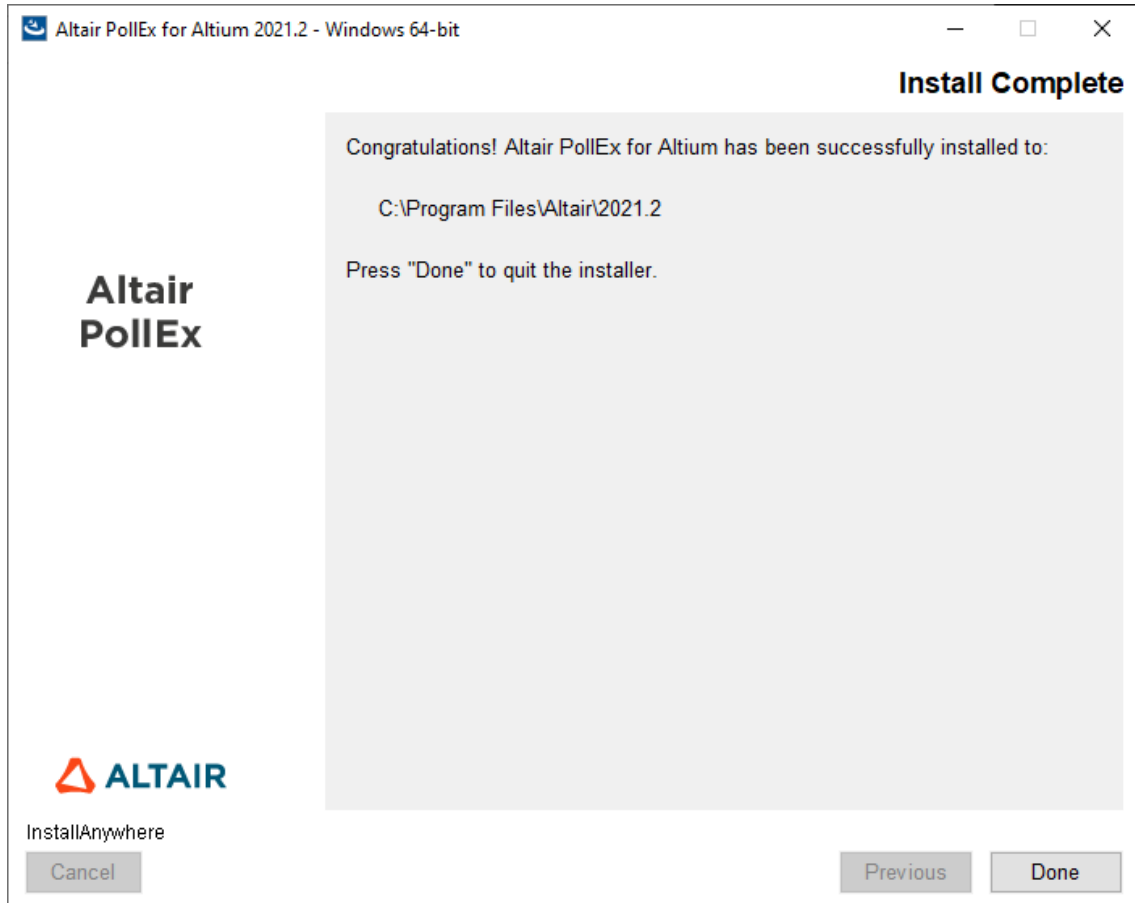
View the installation progress.



- **Exiting the Installation Wizard**

The **Install Complete** panel is displayed.

1. Once the installation is complete, the **Install Complete** panel is displayed.
2. Click **Done** to exit the installer.



5. Uninstall Altair PolIEx for Altium

1. From the Control Panel, click **Programs > Programs and Features > Uninstall or change a program** to launch the PolIEx uninstaller.
2. Double-click **Altair PolIEx for Altium 2021.2**.
3. Follow the prompts to proceed with uninstallation.

6. Going Forward

Altair PolIEx for Altium tutorial is available with a sample design and a template for DFM.

To access the tutorial, you need to run Altair PolIEx PCB.

- From the start menu, click **Altair 2021.2 > PolIEx PCB 2021.2**.
- From the menu bar, click **Help > Tutorials**.

For additional questions, please contact our PolIEx for Altium support team at pfasupport@altair.com.